

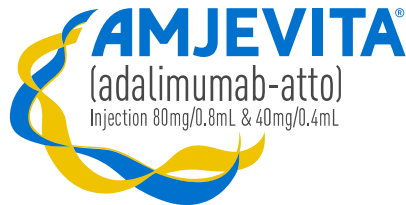
MY AMJEVITA® SURECLICK® INJECTION GUIDE

A RESOURCE ROADMAP TO HELP SUPPORT YOUR
SELF-INJECTION JOURNEY WITH THE 40 MG/0.4 ML
AND 80 MG/0.8 ML FORMULATION OF AMJEVITA

Other dosage presentations/forms are also available. Be sure to read
and follow the Instructions for Use that comes with your medication.



This resource is intended to provide you with supplemental information about the AMJEVITA SureClick® Autoinjector and does not replace the AMJEVITA Instructions for Use. Do not try to inject AMJEVITA yourself until you have been shown the right way to give the injections by a healthcare professional. Please review the Instructions for Use included with your prescribed medication prior to performing your injection. If you have further questions, please contact your doctor.



Getting
Started

Inject

Frequently Asked
Questions

Travel
Guidance

GETTING STARTED WITH YOUR SURECLICK® AUTOINJECTOR

This resource is intended to provide you with supplemental information about the AMJEVITA® SureClick® Autoinjector (40 mg/0.4 mL and 80 mg/0.8 mL) and does not replace the Instructions for Use. Do not try to inject AMJEVITA yourself until you have been shown the right way to give the injections by a healthcare professional. Please review the [Instructions for Use](#) included with your prescribed medication prior to performing your injection. If you have further questions, please contact your doctor.



You can also access the Instructions for Use by holding your smartphone camera over the code.



Getting
Started

Inject

Frequently Asked
Questions

Travel
Guidance

GETTING STARTED AT HOME WITH YOUR SURECLICK® AUTOINJECTOR



When you start using the AMJEVITA® SureClick® Autoinjector for the very first time, you may wonder if you're going to do it right.

You may have questions or feel uncertain about the process. Other patients feel the same. You are not alone.

There's a lot to learn, and you want to get it right. With practice, you can begin to feel more confident and comfortable with the process.

With this resource and the online tools, you can do this... and you can read this as many times as you like, even if you are already experienced or want to remember the injection steps after a while. ***Now, let's get started!***

Carefully review this educational resource which offers additional helpful information just for you and your caregiver, including:

1. Key injection steps
2. Helpful tips
3. Resources and tools
4. Answers to frequently asked questions
5. Travel guidance

PREPARE YOURSELF AND CREATE A SELF-INJECTION ROUTINE THAT WORKS FOR YOU

Before you start the injection process, it's important to be prepared. Creating **a routine that works for you** can help manage your injections and make you feel more comfortable with the process over time.

Here are some tips to help you start a routine that's right for you:



Set up a comfortable, distraction-free environment before each injection. Consider a room where you can close the door so that other people can't distract or interrupt you.



Keep your injection supplies in the same place so they are easy for you to find.



Add reminders to your calendar or create phone alerts so you don't miss a dose. Some people like to use an injection log to write dates for their injection.



Read through the Instructions for Use and all the information in this resource before you start.



Getting
Started

Inject

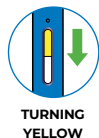
Frequently Asked
Questions

Travel
Guidance

PREP | GET TO KNOW YOUR SURECLICK® AUTOINJECTOR

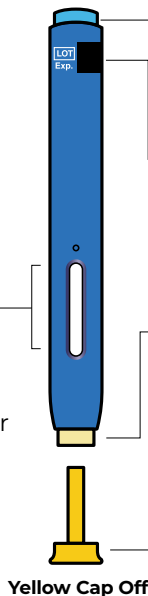
Introduction to the Autoinjector

- SureClick® Autoinjector is a ready-to-use Autoinjector prefilled with your medication
- Please read the Instructions for Use for detailed information prior to performing your injection

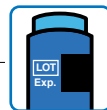


WINDOW will turn **yellow** during the injection

Make sure the medication in the window is clear and colorless to pale yellow

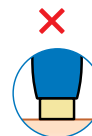


LIGHT BLUE START BUTTON will work only after the safety guard has been unlocked



EXPIRATION DATE Do not use the Autoinjector after the expiration date on the label

CREAM SAFETY GUARD unlocks the start button and covers the needle after injection is complete



BEFORE UNLOCKING



AFTER UNLOCKING

⚠ DO NOT touch safety guard (needle inside).

⚠ DO NOT remove cap until ready to inject. Inject within **5 minutes** of removing cap.

⚠ DO NOT use the Autoinjector if the carton is damaged or seal is broken.

PREP | READY THE AUTOINJECTOR

Prep the Autoinjector by bringing it to room temperature.



Take out one Autoinjector that you need for the current injection

- Gather supplies, including sharps disposal container



Allow the Autoinjector to come to room temperature for 15 to 30 minutes before injecting



Use the Autoinjector within 5 minutes after removing the cap

- ⚠ **DO NOT** remove the cap until you are ready to inject.
- Waiting longer than 5 minutes can dry out the medication
- ⚠ **DO NOT** recap.

⚠ **DO NOT** freeze.

⚠ **DO NOT** put back in refrigerator once at room temperature.

⚠ Discard medication if left out of the refrigerator after **14 days**.

⚠ **DO NOT** leave in car.

⚠ **DO NOT** leave the Autoinjector in direct sunlight.

⚠ **DO NOT** warm or heat the Autoinjector.

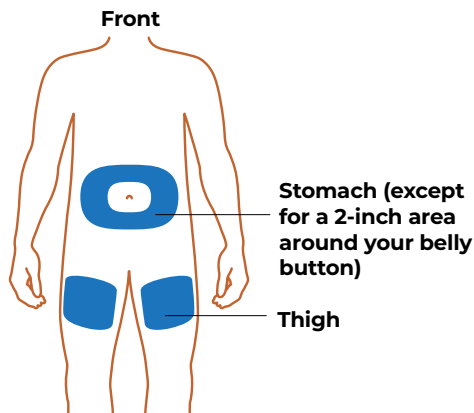
PREP | SELECT AND CLEAN THE INJECTION SITE

- Wash your hands thoroughly with soap and water
- Clean the injection site with an alcohol wipe, and let your skin dry on its own
- Select one of the following injection sites:

- Begin by gathering materials in a quiet, calm, and well-lit area. Choose a location to ensure you aren't interrupted. Place supplies on a flat surface

- **Pinch** the front of the thigh or stomach to create a firm surface. A caregiver may inject in back of the upper arm

- Clean your injection site with an alcohol wipe and let your skin dry on its own



- ⚠ **DO NOT** inject through your clothes.
- ⚠ **DO NOT** touch this area again before injecting.
- ⚠ **DO NOT** inject into areas where the skin is tender, bruised, red, or hard.

Tips!

- Pinch the skin to create a firm base
- Consider an injection site that has a thicker fatty layer
- Rotate your injection site each time you inject. Some people keep a diary or log to track their injection locations

INJECTING WITH YOUR AMJEVITA® (ADALIMUMAB-ATTO) SURECLICK® AUTOINJECTOR

In this section, you will find the steps for injecting your medication.

Please read the Instructions for Use for detailed information prior to starting the injection.



Getting
Started

Inject

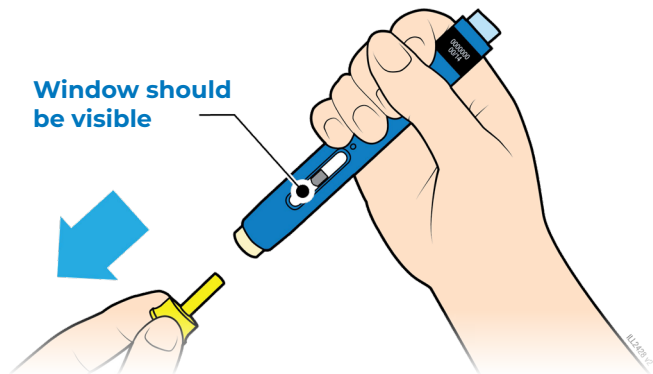
Frequently Asked
Questions

Travel
Guidance

INJECT | REMOVE THE YELLOW CAP FROM THE AUTOINJECTOR

Pull the yellow cap straight off and inject right away. You may need to pull hard.

- If you have questions, seek help by referencing the Instructions for Use or calling **1-888-8AMJEVITA (1-888-826-5384)** before removing the cap.



Use the Autoinjector within 5 minutes after removing the cap

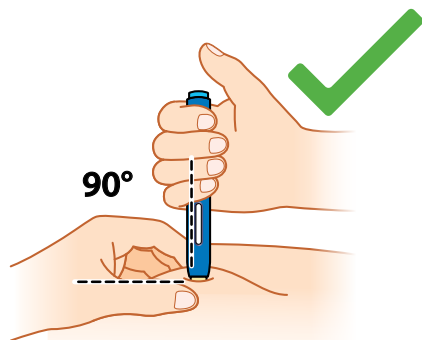
⚠ DO NOT take the yellow cap off until you are ready to inject, in order to prevent the medicine from drying out.

⚠ DO NOT put the cap back on the Autoinjector once it has been removed.

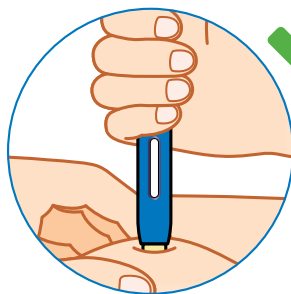
Tip!

- If you have questions before you remove the yellow cap, re-read the [Instructions for Use \(IFU\)](#).

INJECT | PLACE THE SAFETY GUARD ON THE SKIN AT A 90-DEGREE ANGLE

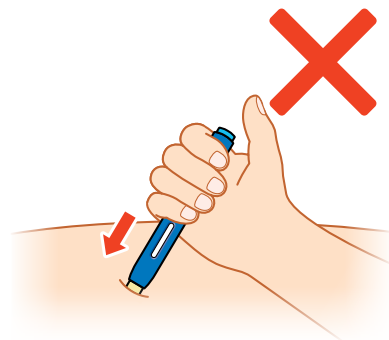


Place Autoinjector **straight down** at 90 degrees onto the skin.



Be sure you can see the entire medication window and that your fingers don't cover the window.

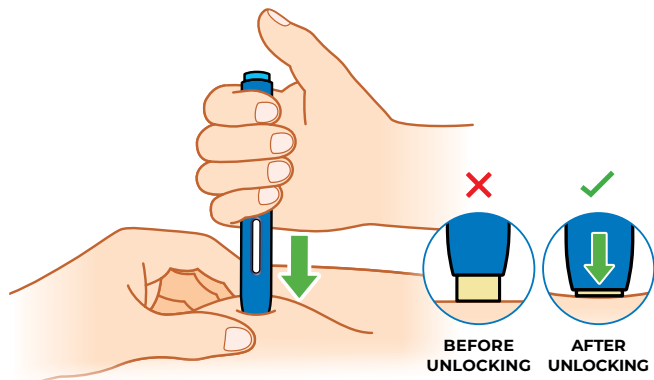
⚠ DO NOT change positions after the injection has begun.



⚠ DO NOT apply the Autoinjector to the skin at an angle. You may not be able to make full contact with the skin, and that can prevent the Autoinjector from working properly.

INJECT | PUSH AUTOINJECTOR FIRMLY DOWN ONTO THE SKIN UNTIL THE CREAM SAFETY GUARD STOPS MOVING

To unlock the light blue start button, **PUSH** the Autoinjector firmly onto the skin until you can't push it anymore.



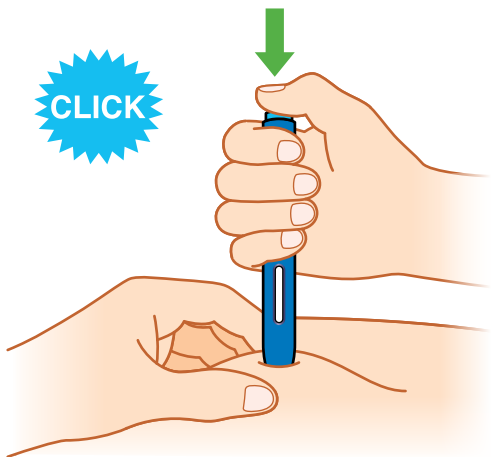
PUSH the Autoinjector firmly down onto the skin until the cream-colored safety guard stops moving

- **PINCH** your skin to create a firm surface to push against
- **KEEP PUSHING. DO NOT LIFT**
- Start button will only work after the **SAFETY GUARD** has been pushed all the way in

REMEMBER: You **MUST** unlock the Autoinjector by firmly pushing into your skin **WHILE** pressing the start button to perform the injection.

INJECT | PRESS START BUTTON TO BEGIN INJECTION

Next, **PRESS** the light blue start button to start the flow of the medication



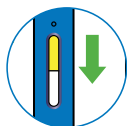
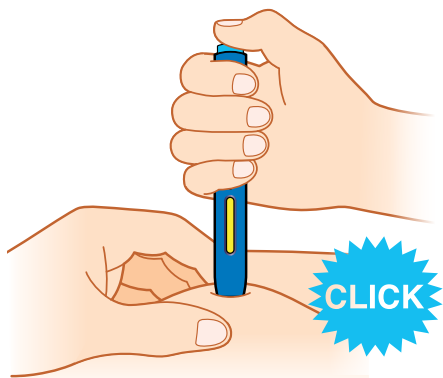
PRESS start button until you hear or feel a click

- **KEEP HOLDING** the Autoinjector down with the same pressure throughout the injection
- **START BUTTON** will work only after the safety guard has been pushed all the way in

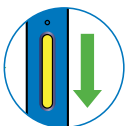
- ⚠ If you do not hear or feel a click after pressing the start button, and the window is still clear, ensure that the safety guard is pushed all the way down first. Then try to press the button again.
- ⚠ These steps need to be completed in this order for a successful injection.

INJECT | WATCH & CONFIRM MEDICATION WINDOW TURNS YELLOW

Finally, watch & confirm the medication window turns **YELLOW** to indicate the successful completion of the injection



TURNING
YELLOW



COMPLETE

WATCH & CONFIRM

window is fully **yellow**

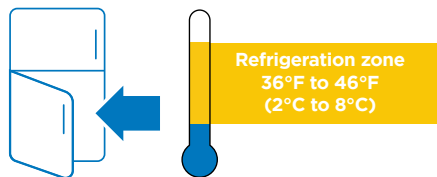
- Continue holding the Autoinjector down on your skin until the medication window turns fully **yellow** to ensure all the medication has been injected
- The injection can take about **15 seconds**
- Fully **yellow** means it's DONE!

★ CONGRATULATIONS on reviewing the injection process!

Continue to practice the steps **PUSH, PRESS, WATCH & CONFIRM** to help build confidence. Start to make these simple steps a part of your routine, and be sure to contact your care team if you have any questions or concerns.

STORAGE AND DISPOSAL

Refrigeration guidelines:




Refrigeration zone
36°F to 46°F
(2°C to 8°C)

 **DO NOT** freeze Autoinjector.

- When you receive the Autoinjector, be sure to place it directly into the refrigerator
- Store Autoinjector in the refrigerator (36°F to 46°F) until ready to use
- Store Autoinjector in original carton to protect from light or physical damage
- Only remove the Autoinjector you plan to use

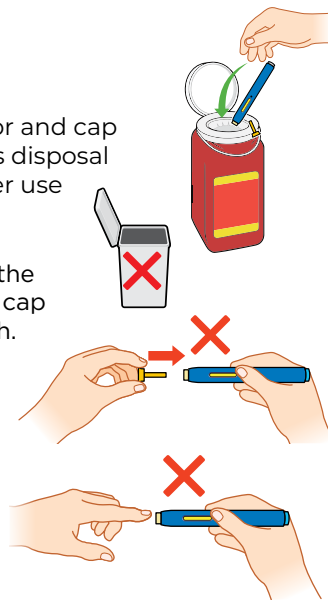
Disposal guidelines:

- Put the used Autoinjector and cap in an FDA-cleared sharps disposal container right away after use

 **DO NOT** throw away the Autoinjector or yellow cap in your household trash.

 **DO NOT** put the yellow cap back on.

 **DO NOT** touch the cream safety guard.



CONGRATULATIONS!

You know the process—Now make it part of your routine.

Continue to use this resource to review your injection steps to help build confidence when self-injecting. You may find that you'll get more comfortable with each injection.

Remember:

PUSH, PRESS, WATCH & CONFIRM

Be sure to contact your care team if you have any questions or concerns.

Please scan the code below to view the SureClick® Autoinjector Injection Overview Video



Have supplemental injection questions?
Call 1-888-8AMJEVITA (1-888-826-5384)
Monday-Friday from 8AM to 8PM ET



Getting
Started

Inject

Frequently Asked
Questions

Travel
Guidance

FREQUENTLY ASKED QUESTIONS

TEMPERATURE CONTROL AND STORAGE:

What is the best way to store my SureClick® Autoinjector? Store in the refrigerator (36°F to 46°F) in its original box.

I left my Autoinjector outside of the refrigerator. Is this okay? Your Autoinjector can be stored at room temperature between 68°F to 77°F for up to **14 days** in its original box. Do not return to refrigerator once it reaches room temperature.

**Room temperature:
Between 68°F to 77°F**



ROOM TEMPERATURE GUIDELINES:

Do I really have to wait 15 to 30 minutes for the Autoinjector to reach room temperature before injecting? Yes. If you don't, it may take longer to complete the injection, and you may experience discomfort.

CAP REMOVAL QUESTIONS:

Why do I have to use the Autoinjector within 5 minutes after I remove the cap?

If you wait longer than 5 minutes, the medication can dry out and clog the needle, resulting in failure to start injection.

How do I know the difference between the start button and the injection end?

The start button is light blue and the safety guard is cream-colored. The medication window is closer to the safety guard.

⚠ DO NOT touch the safety guard (needle inside).

FREQUENTLY ASKED QUESTIONS (CONT'D)

INJECTION SITE QUESTIONS:

Why do I need to pinch the skin? You need to **PINCH** the skin to create a **firm surface** and **to maintain a firm base** throughout the entire injection.

Can I move the Autoinjector around on my skin? Yes, it's okay to move **BEFORE** you **PUSH** the start button.

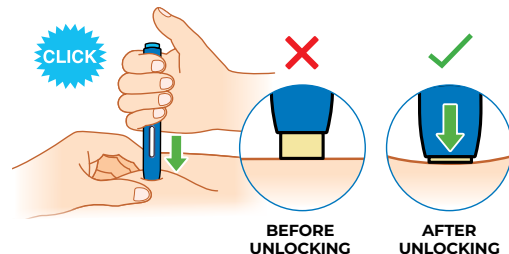
⚠ DO NOT move the Autoinjector **AFTER** you **PUSH** the **START** button, as you may not receive the full dose of medication.

START BUTTON QUESTIONS:

Do I press and release the start button, or do I press and hold down the start button during the injection? If you need to release your thumb, it's okay. Once the injection has started, do not lift the Autoinjector until the injection is complete.

What will happen if I press the start button before I am ready to do the injection? The Autoinjector will not work and will not dispense medication unless the safety guard is unlocked prior to the start button activation.

What if I am unable to push down the start button? Check to see that the safety guard is no longer visible. If the safety guard is not depressed fully, the start button may not work. You will hear or feel a **CLICK** when the start button has been activated correctly.



GENERAL TRAVEL GUIDANCE


GENERAL TRAVEL GUIDANCE

Yes, you can travel with your Autoinjector so you can continue to take your injections. In fact, it's important that you don't miss your injection when traveling.

SHORT TRIPS

Traveling less than 14 days:

- Autoinjector can be kept at room temperature up to 77°F (25°C) in the original carton for up to 14 days without refrigeration

 Remember that once your Autoinjectors reach room temperature, you should not put them back in the fridge.

Important! Keep Autoinjector in original carton.

Make sure the carton is stored in a safe place where it won't be damaged or exposed to extreme temperatures or direct sunlight.

Pack what you need for injection, including:

- AMJEVITA® SureClick® Autoinjector
- Alcohol wipes*
- Cotton ball or gauze*
- Bandage
- Puncture-resistant (sharps) disposal container

*Be sure to keep these items clean when you travel.

LONGER TRIPS

Traveling more than 14 days:

- Keep within the safe temperature zone
- Reach out to your pharmacist and/or doctor to discuss other options such as filling your prescription at your desired destination

CAR AND AIR TRAVEL GUIDANCE



TRAVELING BY CAR:

Make sure your Autoinjector is stored in the safe temperature zone between 68°F to 77°F (20°C to 25°C).

DO NOT leave your Autoinjector in the car if exposed to extreme heat, extreme cold, or direct sunlight.

DO NOT put the Autoinjector back in the refrigerator once it has reached room temperature.



TRAVELING BY AIRPLANE:

Before you travel

- Contact your airline about the carry-on policy for needles, syringes, or injection devices. Security regulations may change
- Research the injection device requirements of other countries you may visit
- Bring a copy of your prescription or a doctor's note to show airport security



TSA OR AIRPORT SECURITY CONSIDERATIONS:

- Notify security screeners that you are carrying a sharps container
- Consider requesting a “hand check” of your medication kit to avoid any delays
- Be prepared to display, handle, and repack your own medication and supplies in order to prevent contamination or damage
- Be sure to keep your medication with you during the flight. **DO NOT** put your medication in your checked baggage

IMPORTANT SAFETY INFORMATION

What is the most important information I should know about AMJEVITA?

You should discuss the potential benefits and risks of AMJEVITA with your doctor. AMJEVITA is a TNF blocker medicine that can lower the ability of your immune system to fight infections. You should not start taking AMJEVITA if you have any kind of infection unless your doctor says it is okay.

- **Serious infections have happened in people taking adalimumab products. These serious infections include tuberculosis (TB) and infections caused by viruses, fungi, or bacteria that have spread throughout the body. Some people have died from these infections.** Your doctor should test you for TB before starting AMJEVITA, and check you closely for signs and symptoms of TB during treatment with AMJEVITA, even if your TB test was negative. If your doctor feels you are at risk, you may be treated with medicine for TB.
- **Cancer.** For children and adults taking TNF blockers, including AMJEVITA, the chance of getting lymphoma or other cancers may increase. There have been cases of unusual cancers in children, teenagers, and young adults using TNF blockers. Some people have developed a rare type of cancer called hepatosplenic T-cell lymphoma. This type of

cancer often results in death. If using TNF blockers including AMJEVITA, your chance of getting two types of skin cancer (basal cell and squamous cell) may increase. These types are generally not life-threatening if treated; tell your doctor if you have a bump or open sore that doesn't heal.

What should I tell my doctor BEFORE starting AMJEVITA?

Tell your doctor about all of your health conditions, including if you:

- Have an infection, are being treated for infection, or have symptoms of an infection
- Get a lot of infections or infections that keep coming back
- Have diabetes
- Have TB or have been in close contact with someone with TB, or were born in, lived in, or traveled where there is more risk for getting TB
- Live or have lived in an area (such as the Ohio and Mississippi River valleys) where there is an increased risk for getting certain kinds of fungal infections, such as histoplasmosis, coccidioidomycosis, or blastomycosis. These infections may happen or become more severe if you use AMJEVITA. Ask your doctor if you are unsure if you have lived in these areas
- Have or have had hepatitis B

IMPORTANT SAFETY INFORMATION (CONT'D)

- Are scheduled for major surgery
- Have or have had cancer
- Have numbness or tingling or a nervous system disease such as multiple sclerosis or Guillain-Barré syndrome
- Have or had heart failure
- Have recently received or are scheduled to receive a vaccine. AMJEVITA patients may receive vaccines, except for live vaccines. Children should be brought up to date on all vaccines before starting AMJEVITA
- Are allergic to any AMJEVITA ingredients
- Are pregnant, planning to become pregnant, breastfeeding, or planning to breastfeed
- Have a baby and you were using AMJEVITA during your pregnancy. Tell your baby's doctor before your baby receives any vaccines

Also tell your doctor about all the medicines you take. You should not take AMJEVITA with ORENCIA® (abatacept), KINERET® (anakinra), REMICADE® (infliximab), ENBREL® (etanercept), CIMZIA® (certolizumab pegol), or SIMPONI® (golimumab). Tell your doctor if you have ever used RITUXAN® (rituximab), IMURAN® (azathioprine), or PURINETHOL® (mercaptopurine, 6-MP).

What should I watch for AFTER starting AMJEVITA?

AMJEVITA can cause serious side effects, including:

- **Serious infections.** These include TB and infections caused by viruses, fungi, or bacteria. Symptoms related to TB include a cough, low-grade fever, weight loss, or loss of body fat and muscle.
- **Hepatitis B infection in carriers of the virus.** Symptoms include muscle aches, feeling very tired, dark urine, skin or eyes that look yellow, little or no appetite, vomiting, clay-colored bowel movements, fever, chills, stomach discomfort, and skin rash.
- **Allergic reactions.** Symptoms of a serious allergic reaction include hives, trouble breathing, and swelling of your face, eyes, lips, or mouth.
- **Nervous system problems.** Signs and symptoms include numbness or tingling, problems with your vision, weakness in your arms or legs, and dizziness.
- **Blood problems (decreased blood cells that help fight infections or stop bleeding).** Symptoms include a fever that does not go away, bruising or bleeding very easily, or looking very pale.
- **Heart failure (new or worsening).** Symptoms include shortness of breath, swelling of your ankles or feet, and sudden weight gain.
- **Immune reactions including a lupus-like syndrome.** Symptoms include chest discomfort or pain that does not

IMPORTANT SAFETY INFORMATION (CONT'D)

go away, shortness of breath, joint pain, or rash on your cheeks or arms that gets worse in the sun.

- **Liver problems.** Symptoms include feeling very tired, skin or eyes that look yellow, poor appetite or vomiting, and pain on the right side of your stomach (abdomen). These problems can lead to liver failure and death.
- **Psoriasis (new or worsening).** Symptoms include red scaly patches or raised bumps that are filled with pus.

Call your doctor or get medical care right away if you develop any of the above symptoms.

The most common side effects of AMJEVITA include injection site reactions (pain, redness, rash, swelling, itching, or bruising), upper respiratory infections (sinus infections), headaches, and rash. These are not all of the possible side effects with AMJEVITA. Tell your doctor if you have any side effect that bothers you or that does not go away.

Remember, tell your doctor right away if you have an infection or symptoms of an infection, including:

- Fever, sweats, or chills
- Muscle aches

- Cough
- Shortness of breath
- Blood in phlegm
- Weight loss
- Warm, red, or painful skin or sores on your body
- Diarrhea or stomach pain
- Burning when you urinate
- Urinating more often than normal
- Feeling very tired

If you have any questions about this information, be sure to discuss them with your healthcare provider. You are encouraged to report negative side effects of prescription drugs to the FDA. Visit www.fda.gov/medwatch, or call 1-800-FDA-1088.

Please see the AMJEVITA full [Prescribing Information](#), including [Medication Guide](#).

IMPORTANT SAFETY INFORMATION (CONT'D)

INDICATIONS

AMJEVITA is a prescription medicine used:

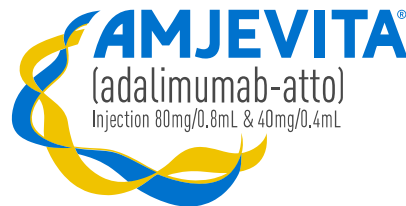
- **To reduce the signs and symptoms of:**
 - **Moderate to severe rheumatoid arthritis (RA) in adults.** AMJEVITA can be used alone, with methotrexate, or with certain other medicines. AMJEVITA may prevent further damage to your bones and joints and may help your ability to perform daily activities.
 - **Moderate to severe polyarticular juvenile idiopathic arthritis (JIA) in children** 2 years of age and older. AMJEVITA can be used alone or with methotrexate.
 - **Psoriatic arthritis (PsA) in adults.** AMJEVITA can be used alone or with certain other medicines. AMJEVITA may prevent further damage to your bones and joints and may help your ability to perform daily activities.
 - **Ankylosing spondylitis (AS) in adults.**
 - **Moderate to severe hidradenitis suppurativa (HS) in adults.**
- **To treat moderate to severe Crohn's disease (CD) in adults and children 6 years of age and older.**
- **To treat moderate to severe ulcerative colitis (UC) in adults.** It is not known if adalimumab products are effective in people who stopped responding to or could not tolerate TNF-blocker medicines.
- **To treat moderate to severe chronic plaque psoriasis (PsO) in adults** who are ready for systemic therapy or phototherapy, and are under the care of a doctor who will decide if other systemic therapies are less appropriate.
- **To treat non-infectious intermediate** (middle part of the eye), **posterior** (back of the eye), **and panuveitis** (all parts of the eye) **in adults.**

IF YOU HAVE QUESTIONS ABOUT INJECTING WITH THE AMJEVITA® SURECLICK® AUTOINJECTOR, CONTACT YOUR HEALTHCARE PROVIDER

If you need supplemental injection support call
1-888-8AMJEVITA (1-888-826-5384) Monday–Friday
from 8 AM–8 PM ET



Please see AMJEVITA full [Prescribing Information](#), including
[Medication Guide](#) and [Instructions for Use](#).



© 2024 Amgen Inc. All rights reserved. Not for Reproduction. USA-501-80512

Getting
Started

Inject

Frequently Asked
Questions

Travel
Guidance